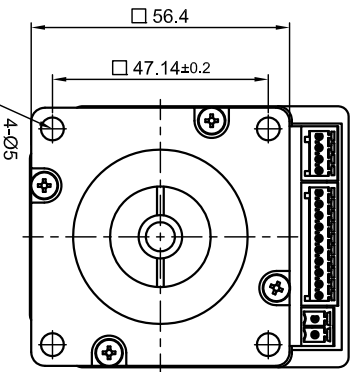
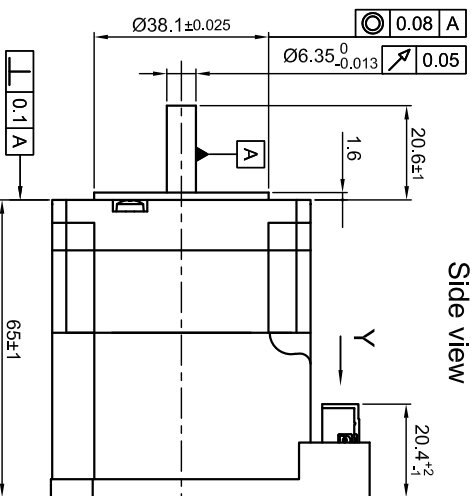


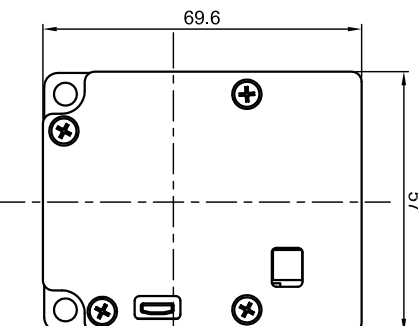
Front view and mounting



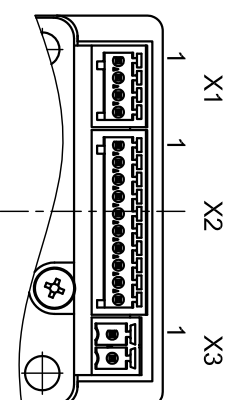
Side view



Rear view

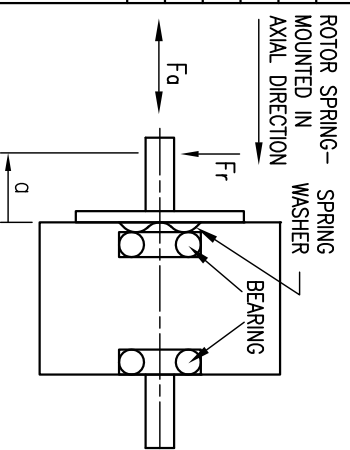


Y view



SPECIFICATION	CONNECTION
VOLTAGE (VDC)	BIPOLAR
AMPS/PHASE(A)	12 TO 48
HOLDING TORQUE (Nm) [lb-in]	4.2
DETENT TORQUE (Nm) [lb-in]	0.537 [4.752]
STEP ANGLE (°)±ACCURACY	0.0147 [0.13]
WEIGHT (Kg) [lb]	1.8±5% TO MICROSTEP
	0.6 [1.32]

PERMISSIBLE RADIAL+AXIAL FORCE



OVERTEMPERATURE PROTECTION (ELECTRONICS): 75°C	
AMBIENT TEMPERATURE -10~ 50°C [14°F ~ 122°F] (HIGHER TEMPERATURE REDUCES DUTY CYCLE)	
INSULATION RESISTANCE 100 Mohm (UNDER NORMAL TEMPERATURE AND HUMIDITY)	
INSULATION CLASS B 130° [266°F]	
DIELECTRIC STRENGTH 500VAC FOR 1 MIN. (BETWEEN THE MOTOR COILS AND THE MOTOR CASE)	
AMBIENT HUMIDITY MAX. 85% (NO CONDENSATION)	

AXIAL-FORCE F _a (N)	RADIAL-FORCE F _r (N)
F _a =10	
	20
	52
	AXIAL
	RADIAL
	0.2M _{max}
	0.02
	AT LOAD MAX: (N)
	200
	4.5

Surface specification DIN ISO 1302	General tolerances DIN ISO 2768-cH	Work piece edge DIN ISO 13715
Nanotec PLUG & DRIVE		
APVD	CHKD	DRN
G.M.	L B	GYG
01.07.16	01.07.16	01.07.16
SIGNATURE		
DATE		

X1, Phoenix MCY-04		X2, Phoenix MCY-10	
Pin No.	Function	Pin No.	Function
1	GND	1	Input1 (+24V)
2	Analog Input(0-10V)	2	Input2 (+24V)
3	Output (open drain)	3	Input3 (+24V)
4	+12V (Voltage Output, max.100mA)	4	-Enable +5/+24V
		5	Enable +5/+24V
		6	-Direction +5/+24V
		7	Direction +5/+24V
		8	-Clock +5/+24V
		9	Clock +5/+24V
		10	GND

X3, Phoenix FMC-02	
Pin No.	Function
1	+VCC(12-48V)
2	GND

PLUG&DRIVE MOTOR			
REV	DESCRIPTION	DATE	DRN

DWG.NO PD4-C5918X4204-E-01